

HAT

Cut 1 of foam sheet

CENTER FRONT



PUNCH HOLES FOR STRAPS

PUG PIR

* Sew all seam allowances
instructions or on patter

* Refer to pattern pieces fo



SKULL & C

Cut 2 of f

BELT B

Cut 1 of f

PIRATE COSTUME

pattern

allowances 1/4" unless otherwise noted in sewing
or on pattern.

turn pieces for cut quantities and grainlines.

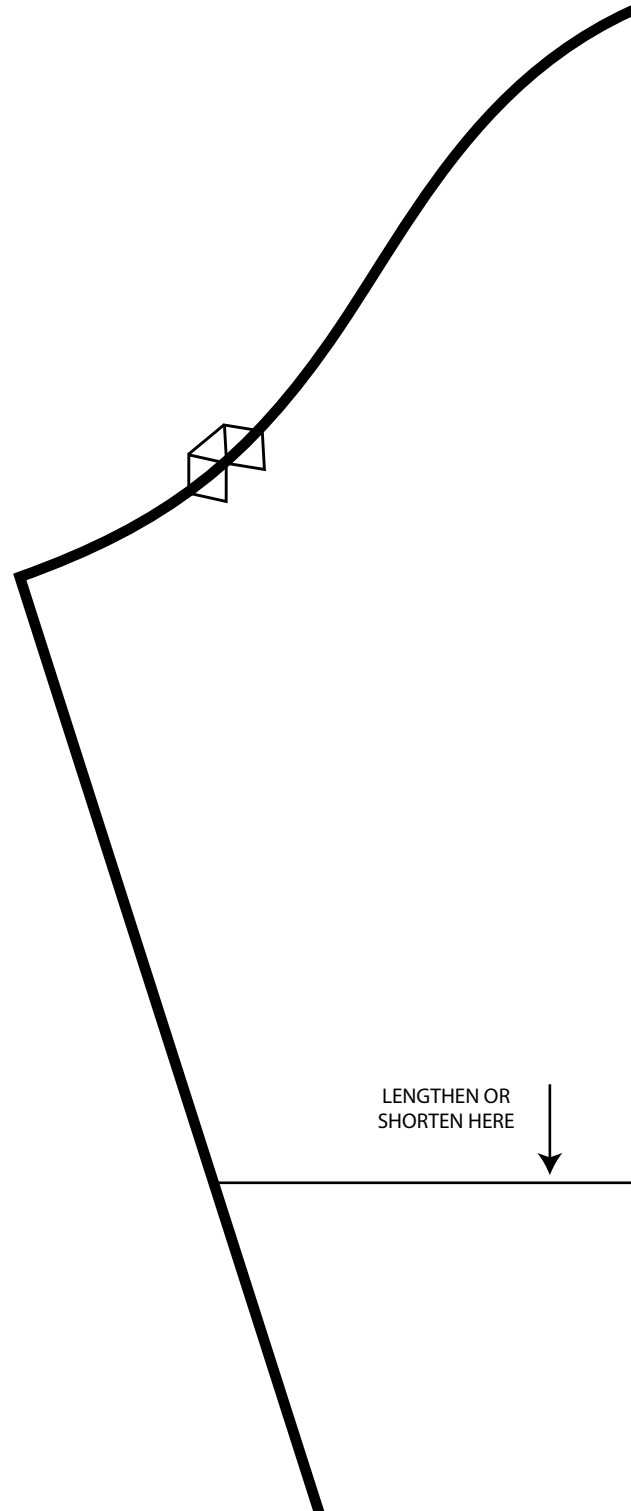


SKULL & CROSSBONES

Cut 2 of foam sheet

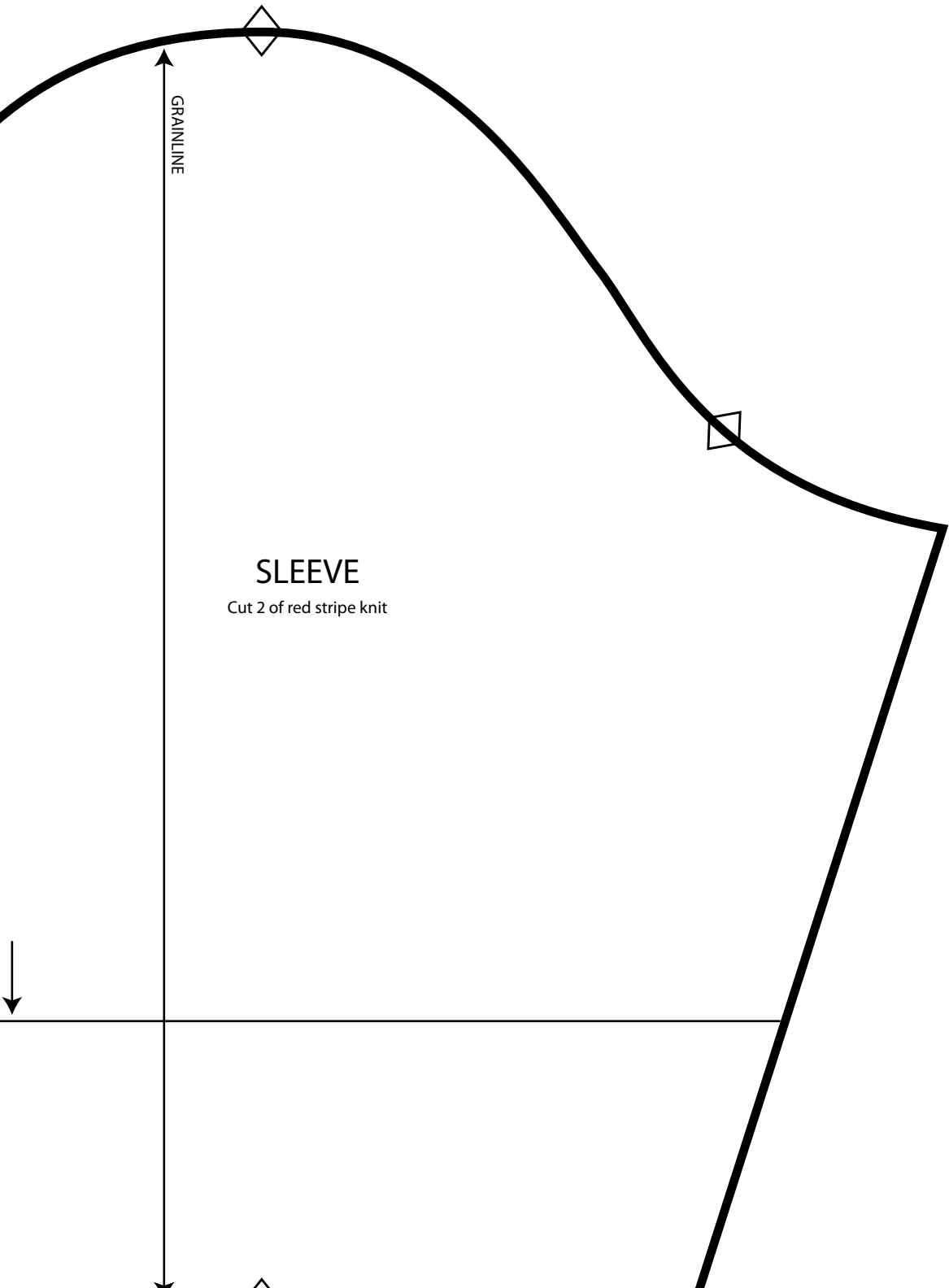
BELT BUCKLE

Cut 1 of foam sheet



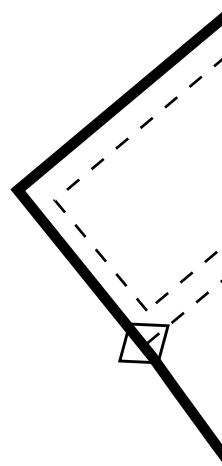
LENGTHEN OR
SHORTEN HERE

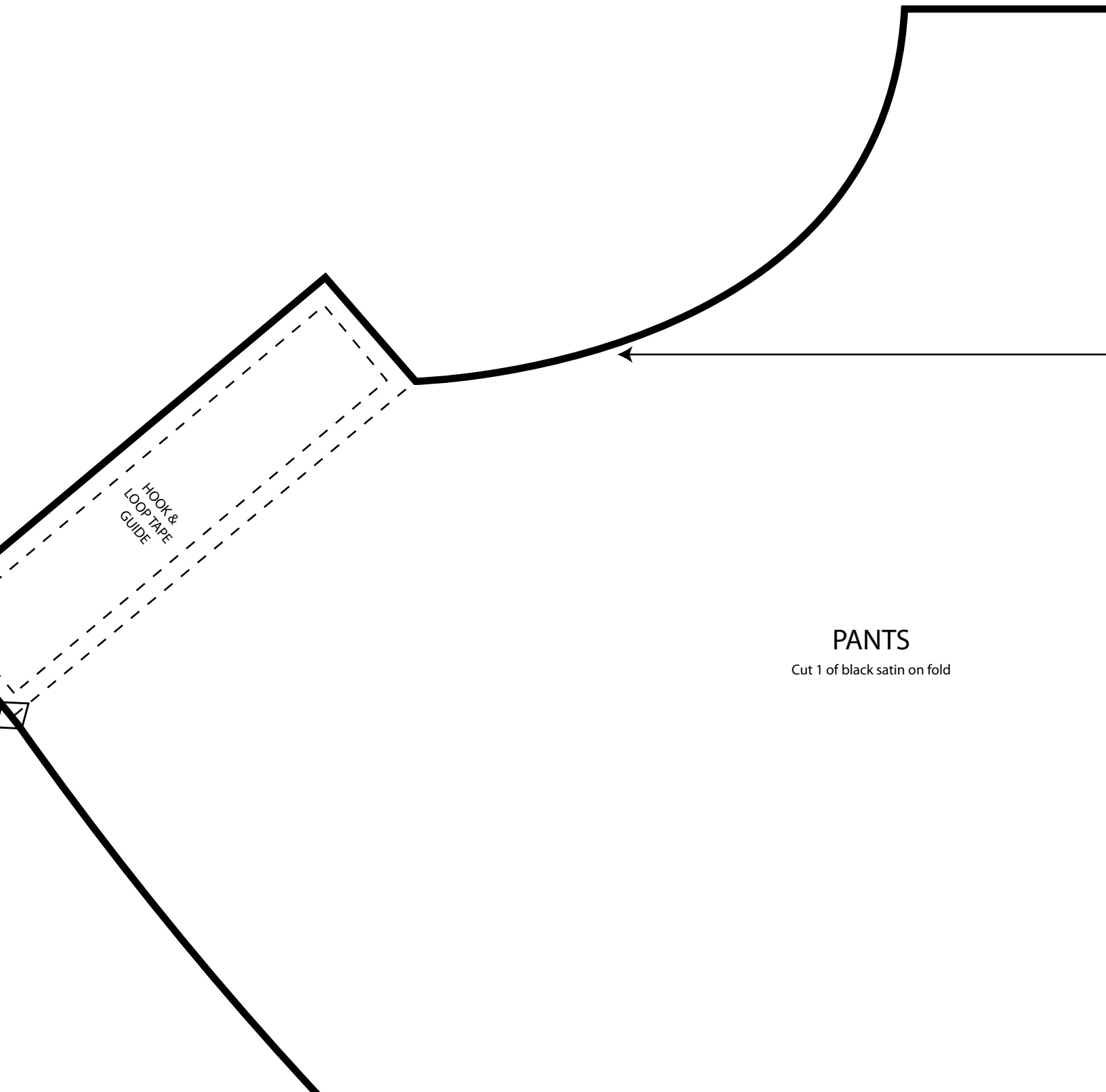




SLEEVE

Cut 2 of red stripe knit

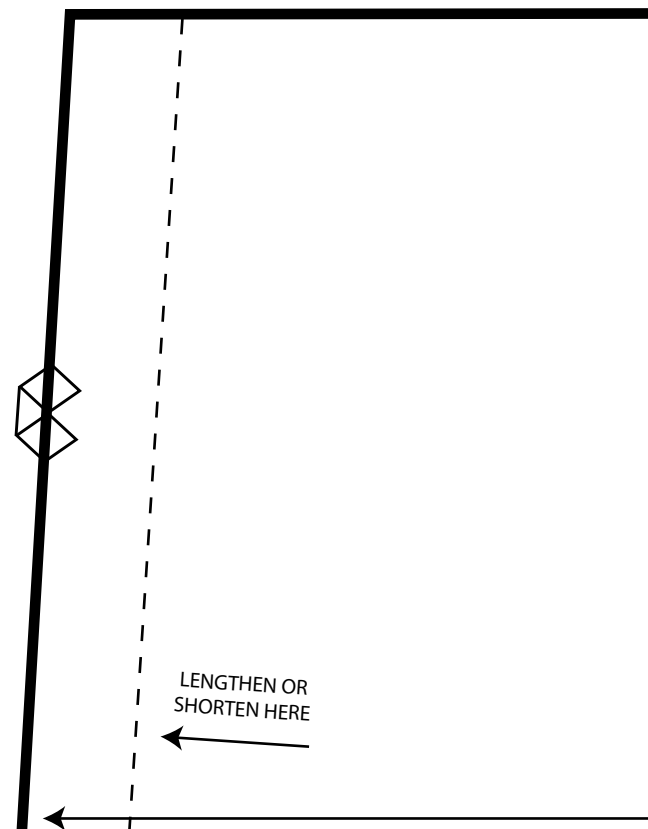
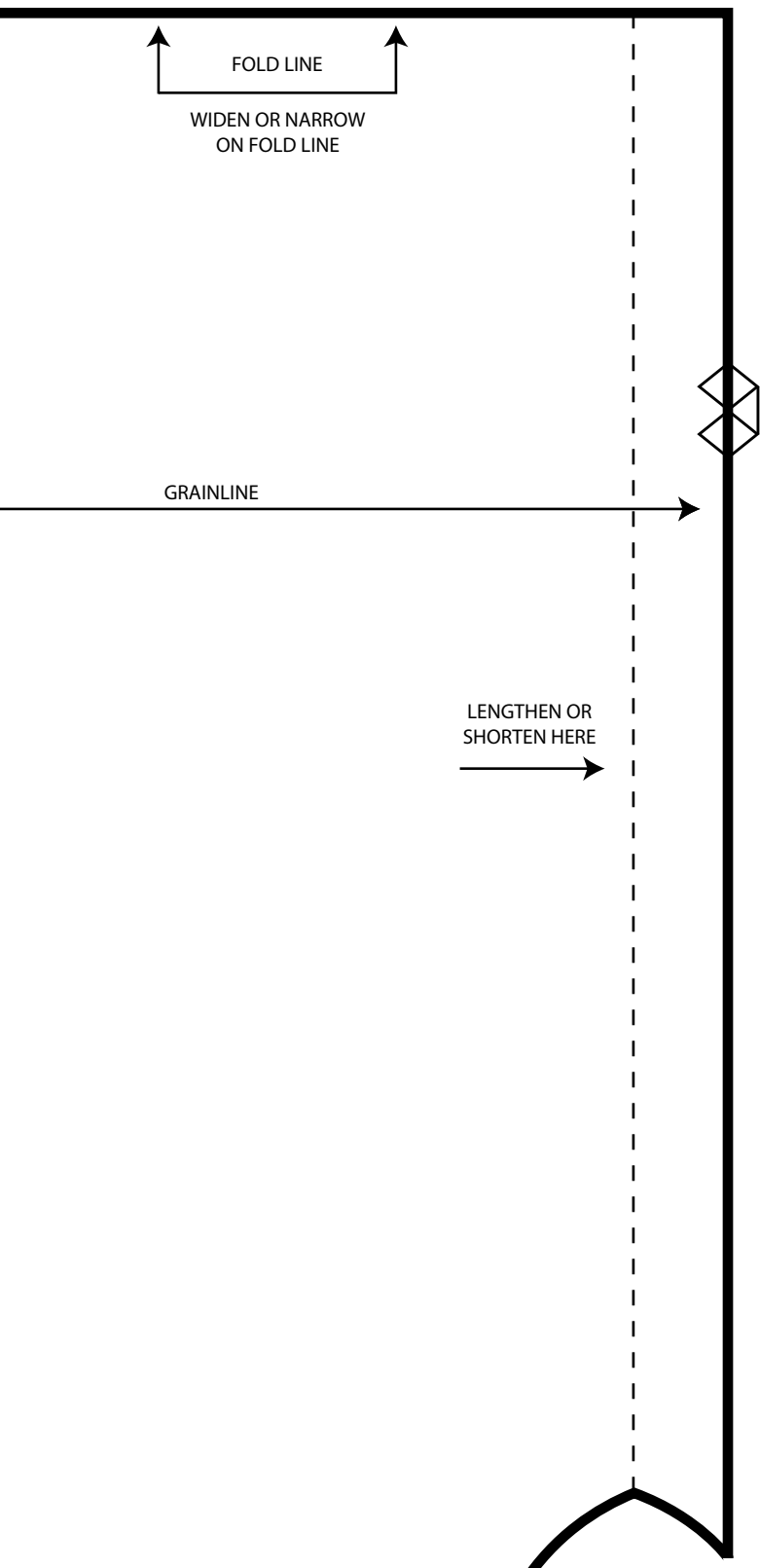




HOOK &
LOOP TAPE
GUIDE

PANTS

Cut 1 of black satin on fold





FOLD LINE

WIDEN OR NARROW
ON FOLD LINE

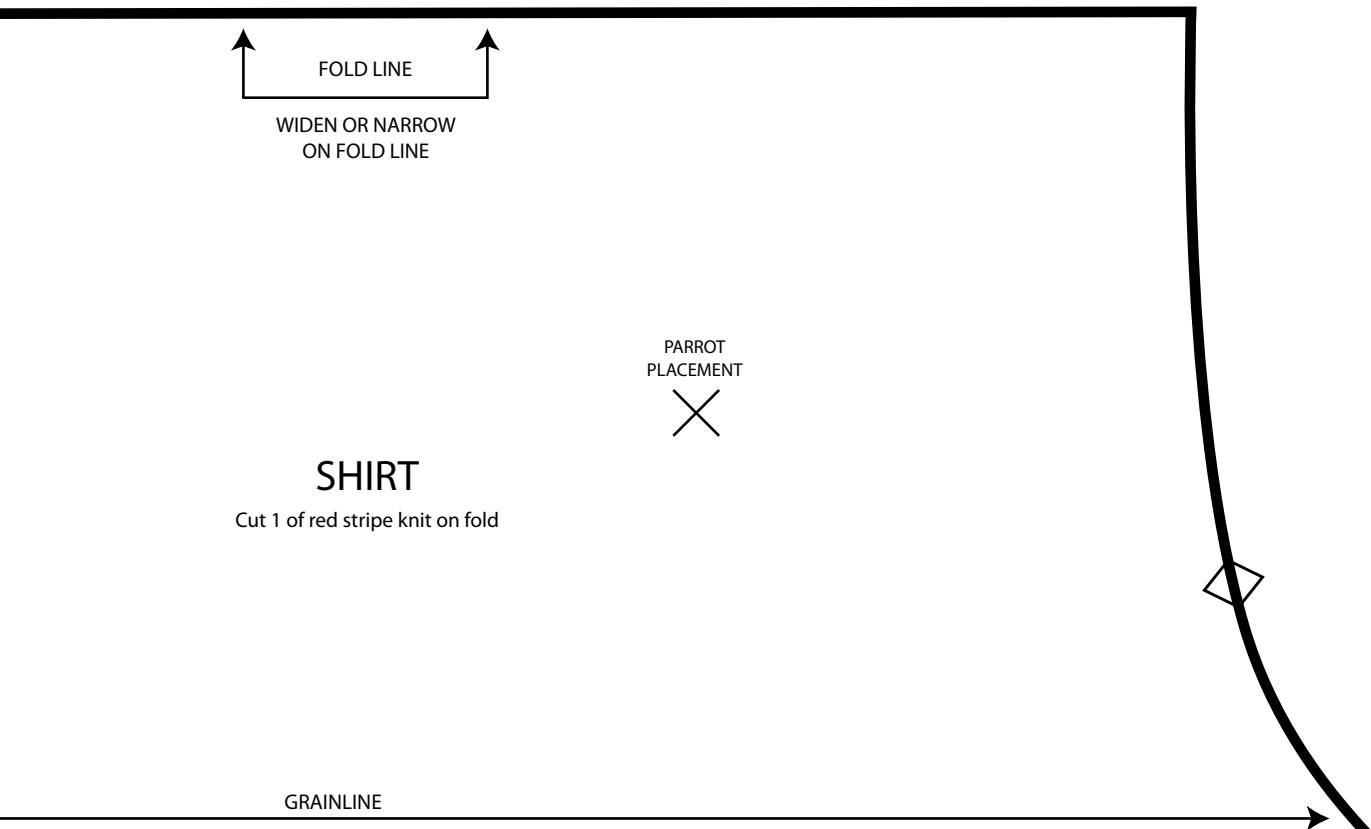
PARROT
PLACEMENT

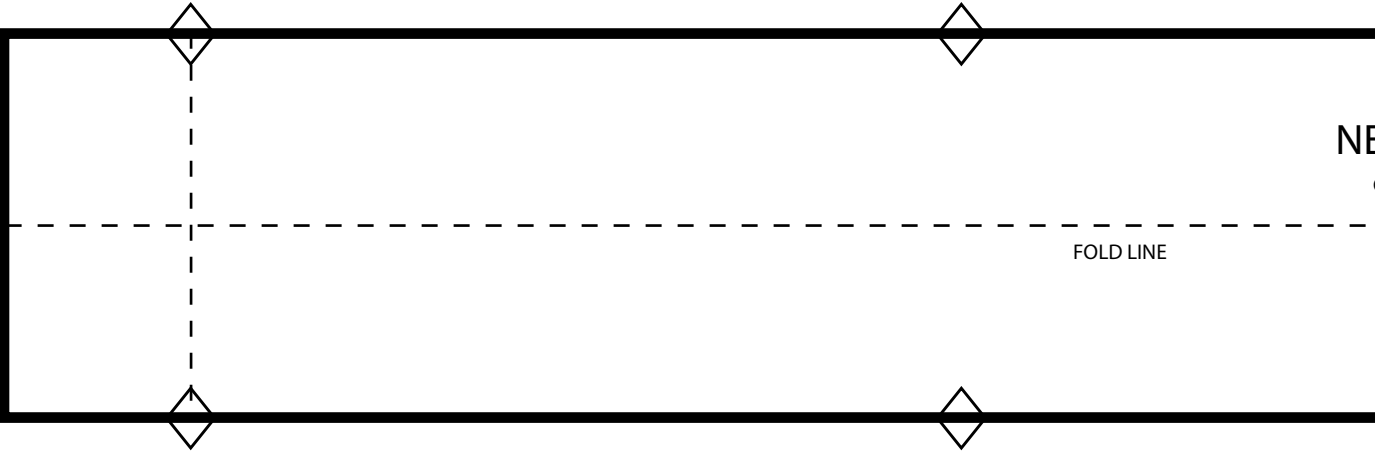
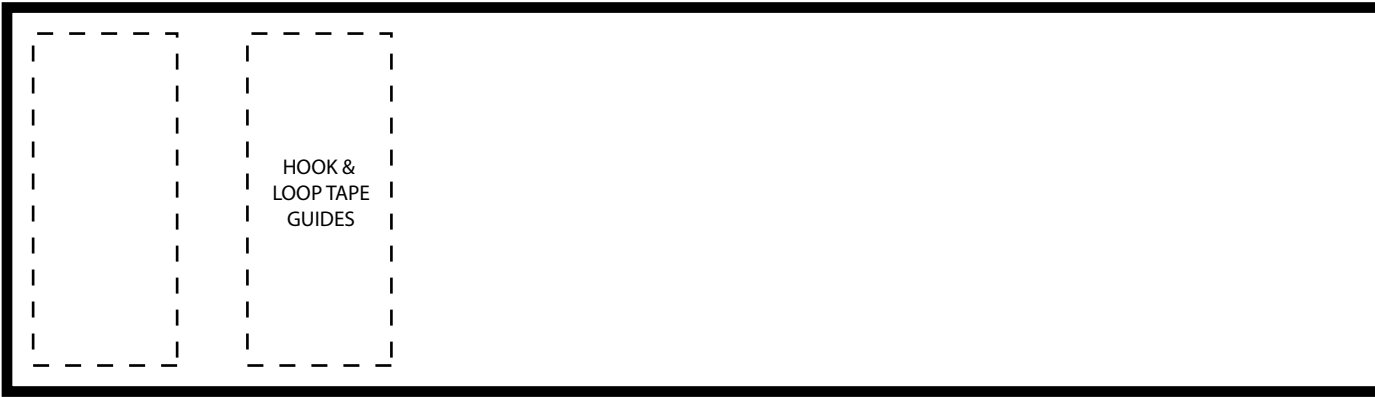
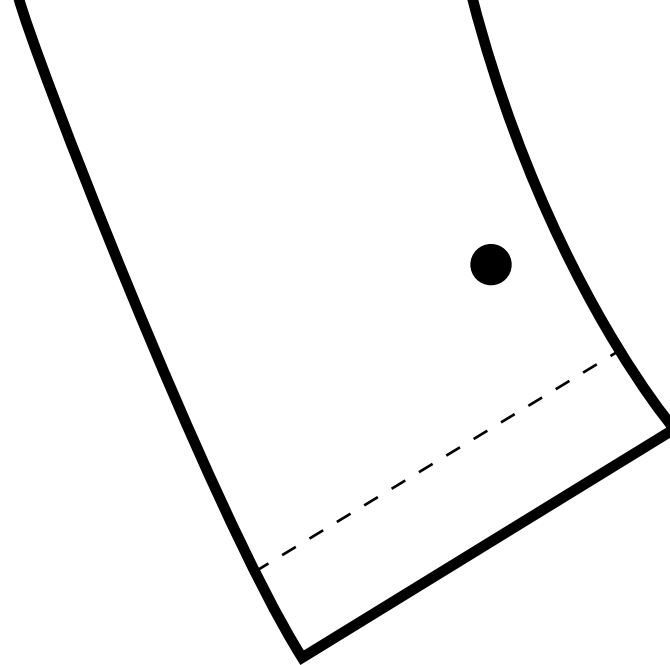


SHIRT

Cut 1 of red stripe knit on fold

GRAINLINE





BELT BUCKLE

Cut 1 of foam sheet



CENTER
FRONT

BELT STRAP

Cut 1 of foam sheet

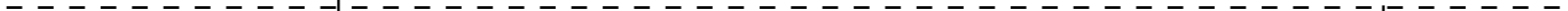
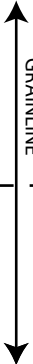
LENGTHEN
OR SHORTEN
HERE

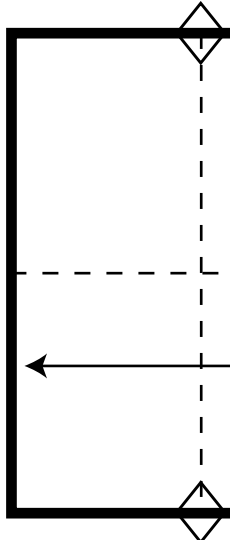
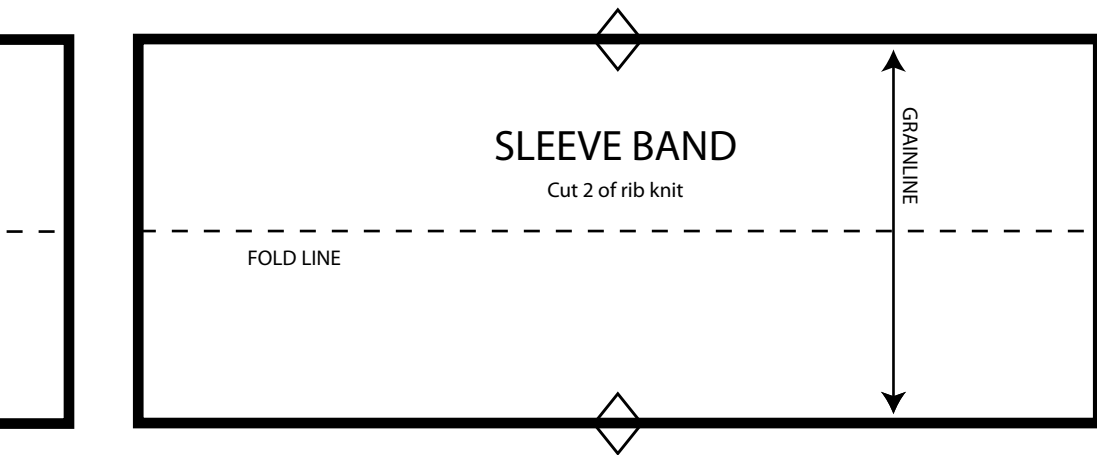


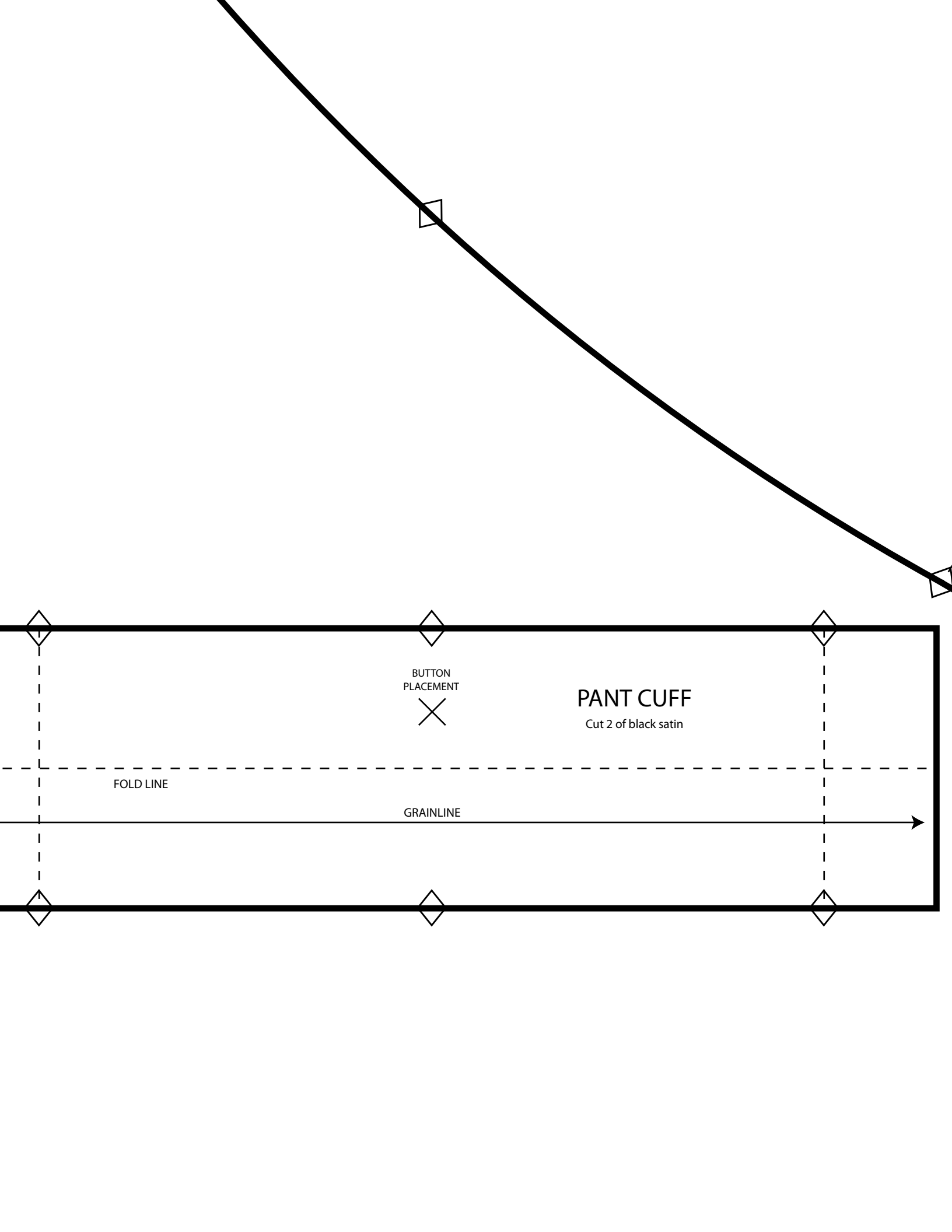
NECK BAND

Cut 1 of rib knit

GRAINLINE







PANT CUFF

Cut 2 of black satin

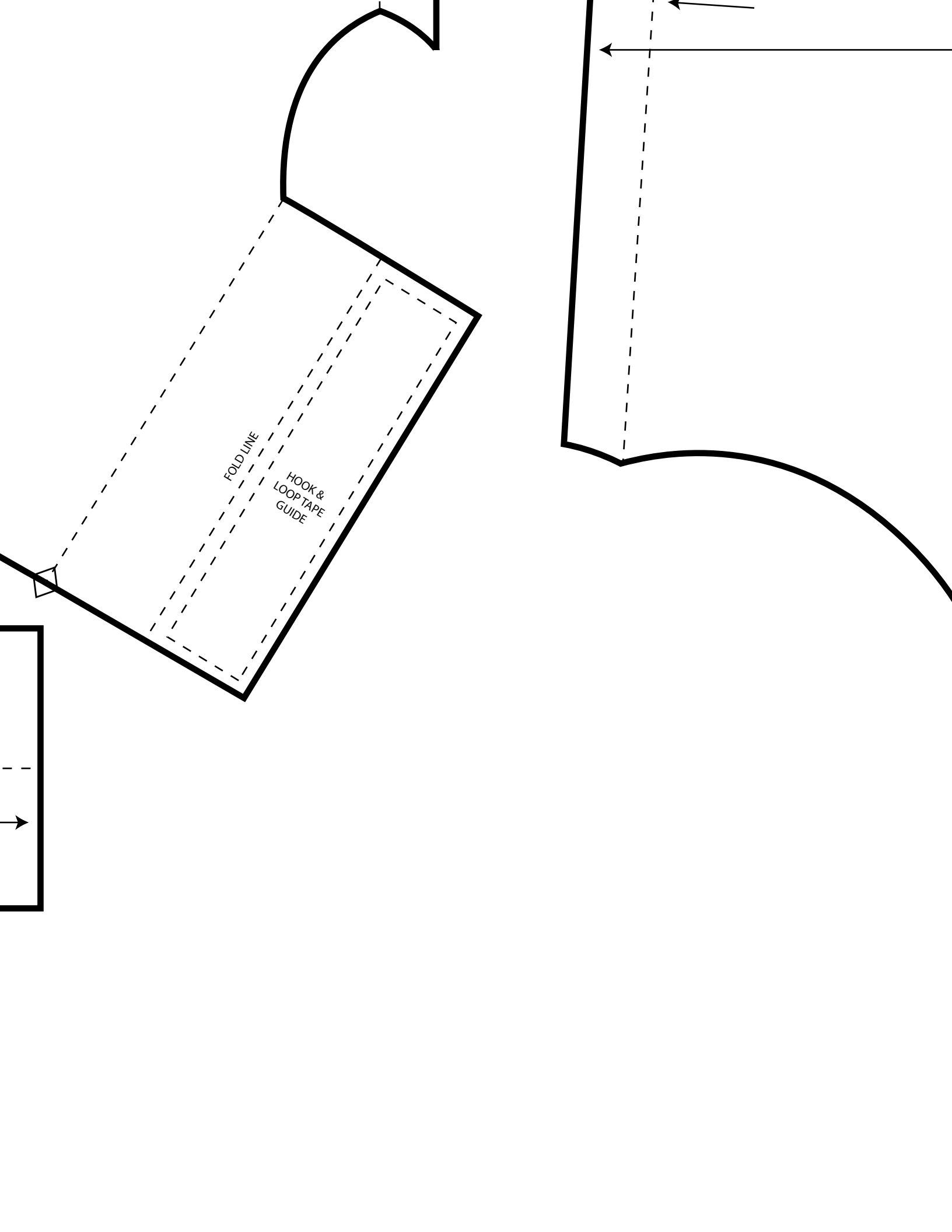
BUTTON
PLACEMENT



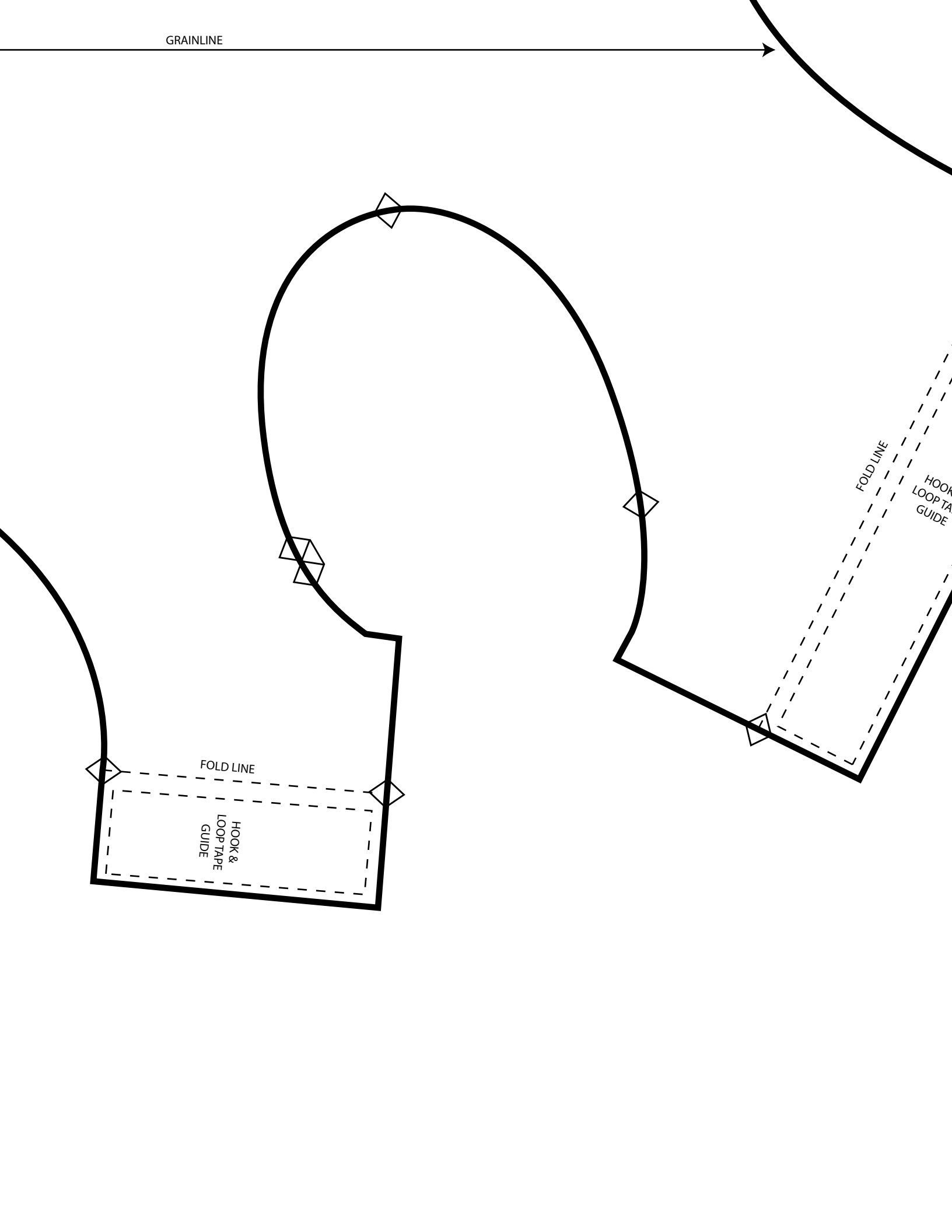
FOLD LINE

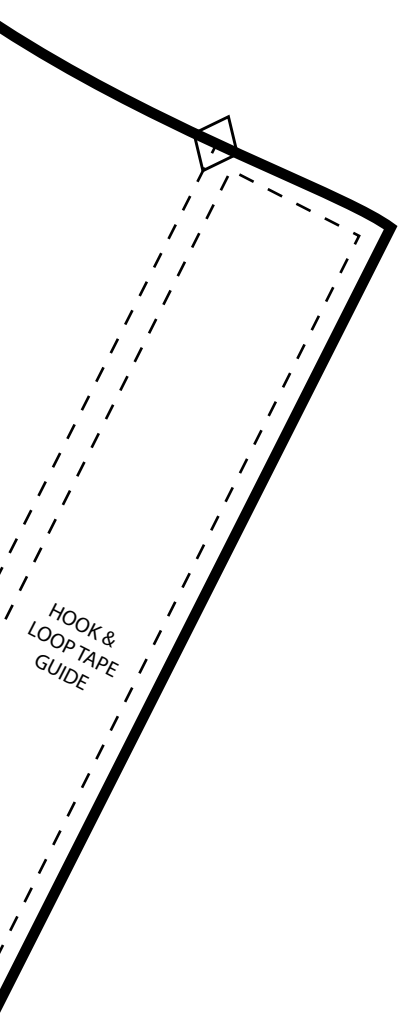
GRAINLINE





GRAINLINE





HOOK &
LOOP TAPE
GUIDE

